

AXM-ECG52554-M001 Ethernet/CAN/Serial Gateway

HIGHLY INTEGRATED

With the integration of two serial, CAN and a two port Ethernet switch integrated into a compact form factor.

FLEXIBLE COMMUNICATION

Capable of Ethernet encapsulation of CAN or Serial data.

POWER SOURCE FLEXIBILITY

The fully isolated Class II power input reduces ground loop noise and problems arising from connections between disparate systems.

COMPACT ROBUST DESIGN

Unit Measures 4" x 5" x 2" in a rugged sheet metal enclosure, powder coated black.

FEATURES/USES

- DeviceNET extender
- Serial Extender
- Serial Encapsulation over Ethernet
- Connecting Legacy Equipment

- The Archonix AXM-ECG52554-M001 is an Industrial gateway device offering optically isolated CAN and isolated DC power supply that is ideal for connecting CAN and Serial interfaces to Ethernet networks. Two 10/100 Mb switched Ethernet ports are provided to support both star and daisy-chained network topologies.
- No additional software is needed. The Device can be configured using standard terminal programs found on typical computer operating systems. Simply connect to either the Serial Port or Ethernet port and set up all the ports in seconds.
- With two devices, one can extend Serial and CAN (ie Devicenet) networks over large distances either through a direct RJ45 connection or through a corporate network.



AXM-ECG52554-M001
Front View



AXM-ECG52554-M001
Rear View

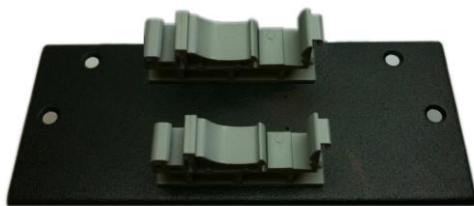
Technical Specifications

OEM MODULE

Unit available without enclosure for integration directly into legacy equipment.

CUSTOMIZATION

Our experienced design team is available for customizing a complete system solution using the AXM-52254-M001 and your existing equipment. From development of an efficient System Architecture to customization and optimization of the unit firmware, we can deliver a reliable, maintainable and cost effective solution in a short amount of time.



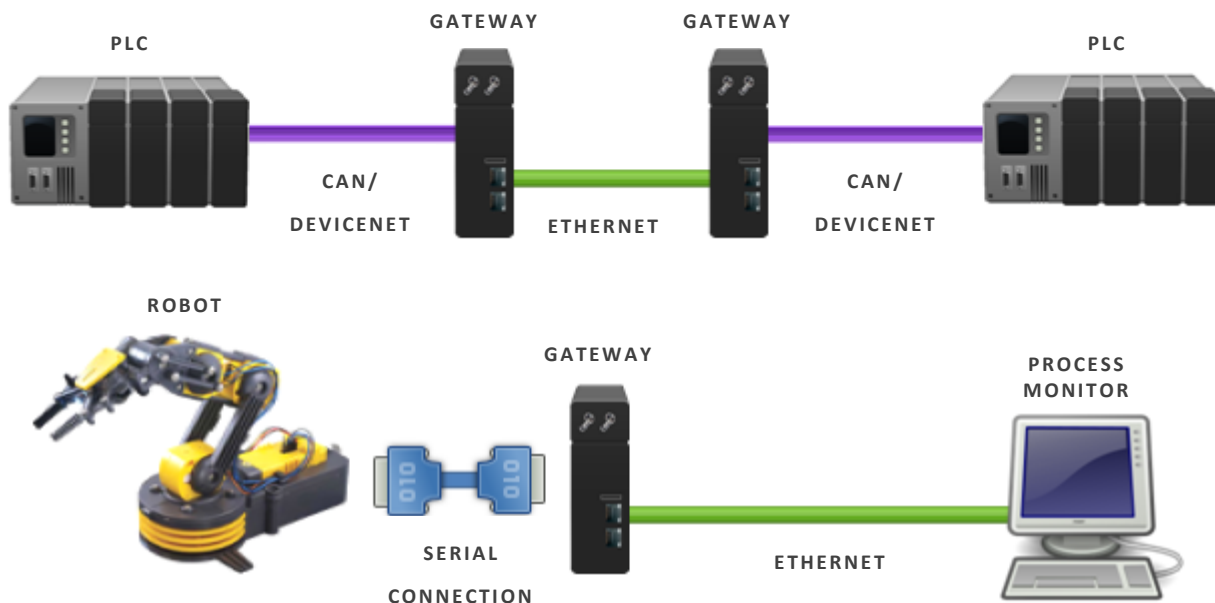
DIN Rail Mounting Clip

For convenient field installation and service, the DIN Clip allows AXM-52254-M001 modules to be located near the industrial control equipment on the DIN rail. The AXM-ECG52254-B000 DIN rail clip mounts to the rear of Arcx AXM-52254-M001 modules. The rugged plastic clips securely mount to all common profiles of 35mm DIN rail (i.e., Top Hat rail) and is compatible with A-series mounting rails.



Mounting Bracket

The AXM-ECG52254-B001 Mounting Bracket option allows device mounting in a variety of different orientations. The AXM-ECG52254-B001 Mounting Bracket mounts to either the rear or the side of Arcx AXM-52254-M001 modules and can be fastened vertically or horizontally. This allows the device to be located and oriented in a manner convenient for field installation and service.



Specifications

- Dual Switched Ethernet Ports (10/100Mb)
- Dual Serial (RS-232/RS422) Ports
- Isolated 24VDC Power Connection
- Isolated CAN Interface
- USB Port (Factory Use)
- Four Status LEDs (Power, Ethernet, CAN, Serial)
- Two (2) Mode Select Switches

Configuration

- Using terminal programs like Hyperterm™ or PuTTY™ one can set
 - Serial - Baudrate, Parity, Stop Bits, RS232/422, TCP/IP port binding
 - CAN - Baudrate, UDP port binding
 - Ethernet - IPaddress (Static vs Dynamic)

Mechanical

- Weight: 2 lbs (900g)
- Size: 4" x 5" x 2"
- Operating Temperature: -10°C to +60°C
- Storage Temperature: -40°C to +85°C
- Humidity : 40% non-condensing
- Enclosure Type : Formed 16gauge steel
- Vibration: 5-17Hz, 0.1" double amplitude displacement 17-640Hz
- Shock: 10G (11ms) peak-to-peak acceleration

OEM Version Also Available:



ORDERING INFORMATION

	PART NUMBER	PRICE
Ethernet/CAN/Serial Gateway Isolated Power Supply	AXM-ECG52254-M001	Call
Ethernet/CAN/Serial Gateway Non-Isolated Power Supply	AXM-ECG52254-M002	Call
ACCESSORIES	PART NUMBER	PRICE
DIN Rail Mounting Clip	AXM-ECG52254-B000	Call
Mounting Bracket	AXM-ECG52254-B001	Call